

# MONTHLY MEMBERSHIP PROGRESS REPORT

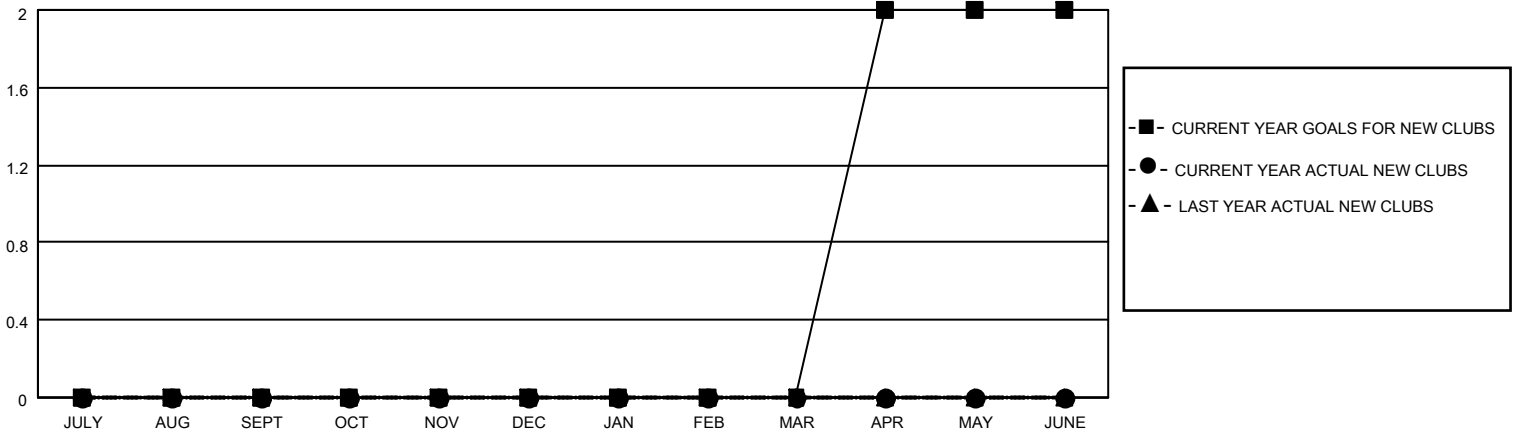
LOCATION NEW ZEALAND

District 202 L

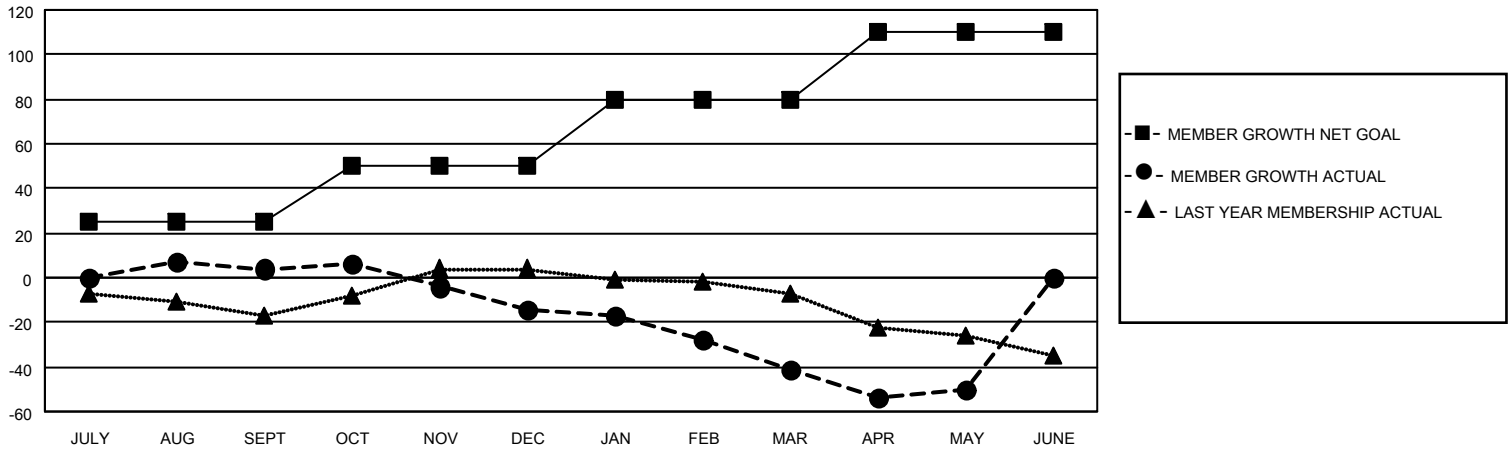
Results as of: 5/31/2022

Clubs				Members			
RESULTS FOR 2021-2022				RESULTS FOR 2021-2022			
QUARTER	NEW CLUB GOAL	NEW CLUBS	DROPPED CLUBS	QUARTER	MEMBER GROWTH NET GOAL	MEMBER GROWTH ACTUAL	DROPPED MEMBERS ACTUAL (including transfers)
JULY/AUG/SEPT	0	0	0	JULY/AUG/SEPT	25	33	23
OCT/NOV/DEC	0	0	0	OCT/NOV/DEC	25	26	38
JAN/FEB/MAR	0	0	0	JAN/FEB/MAR	30	20	41
APR/MAY/JUNE	2	0	0	APR/MAY/JUNE	30	38	43

**GOALS AND ACTUAL NEW CLUBS CUMULATIVE**



**GOALS AND ACTUAL MEMBERS CUMULATIVE**



**DROPPED CLUBS: 0**

**34 CLUBS OF 54 ADDED 1 OR MORE NEW MEMBERS**

**GENDER DISTRIBUTION**

MALE	1,007 (68.32%)
FEMALE	466 (31.61%)
NON BINARY	1 (0.07%)
PREFER NOT TO ANSWER	0 (0.00%)

**DROPPED MEMBERS**

[CLICK HERE FOR CUMULATIVE MEMBERSHIP DATA](#)

DECEASED	18
CLUB CANCELLED	0
OTHER	127
<b>TOTAL</b>	<b>145</b>

TOTAL FAMILY UNIT MEMBERS	142
FAMILY MEMBERS PAYING HALF DUES	71